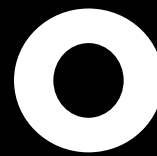


**WE ARE YOUR  
E-SOLUTION**



**QUAN  
TRON**



**Q-LIGHT**

**BEV FCEV**

Based on the Iveco Daily

**THE FUTURE BEGINS NOW!**

**EVERYDAY E-MOBILITY IN THE CITY CENTRE AND  
SUPRAREGIONAL FREIGHT AND PASSENGER TRANSPORT.**



## Dear Customers,

at Quantron AG, we provide you with innovative and practicable **e-mobility solutions** for inner-city and regional passenger and freight traffic. We are already providing answers for all crafts enterprises, passenger transport and logistic companies affected by driving bans and higher charges, as well as for airports and municipal companies with our e-waste vehicles. Thanks to our commercial **vehicles with fuel cell systems (hydrogen)**, we also offer emission-free alternatives for long-distance transport missions. We can serve all of your needs - today! Thanks to our own Q-Engineering and our **Q-Battery** division, we are able to develop and implement individual solutions for you. Get in touch today and we walk you thru from the first to the last step! .

Best regards,

Your Andreas Haller | Founder & Chairman of the Board of Quantron AG

## NEW, STOCK OR USED

Quantron AG offers you field-tested, state of the art and emission-free solutions for your transport of goods or passengers. We have different approaches: either we convert and electrify your existing vehicle or we take a young used one from the market. Otherwise we electrify a brand new vehicle - everything according to your individual requirements and wishes.

## QUANTRON INFRASTRUCTURE

No matter if charging station or wallbox, if classic or fast charger, we support you with the necessary infrastructure according to your requirements. For easy handling, modern payment systems are integrated into our Q-Charging models.

## THINK GREEN

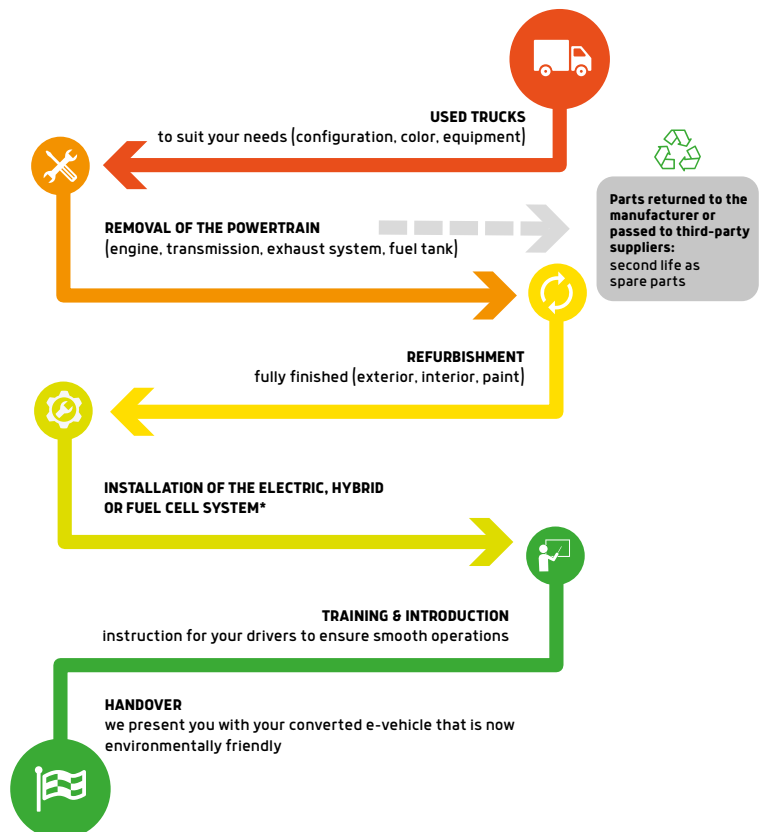
### Second Life Vehicle

We give used vehicles and buses a second, environmentally friendly life. A high potential for climate protection and resource management.

### Second Life Battery

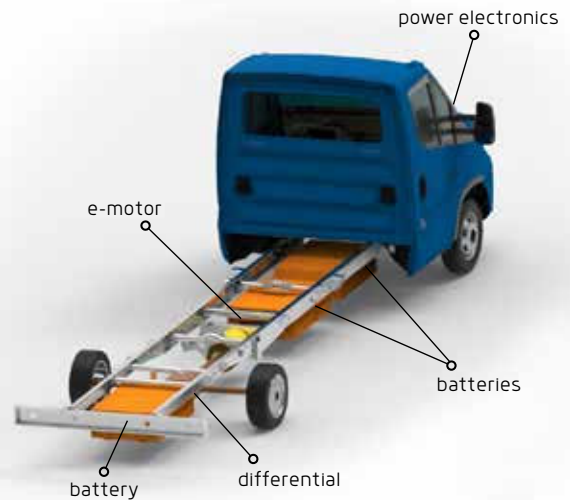
Once the batteries reach their physical end as a traction system, we reuse them as energy storage solution (e.g. as energy storage in combination with photovoltaic, for charging e-vehicles and trapping power surges).

## OUR SUSTAINABILITY CONCEPT - Q-REPOWERING



\*the corresponding components for the drive type are installed, e.g., e-motor, batteries, power electronics, fuel cell, hydrogen tank

# QLI 100 % ELECTRIC (BEV)



## YOUR BENEFITS

- Savings in acquisition costs, as retrofits of existing and used vehicles are possible
- government subsidies\*
- Toll and tax exemption
- Quiet and emission-free operation: benefit for residents and employees in and around the vehicles
- New delivery potentials „on the last mile“
- Ideal for stop-and-go: i. a. recovering of brake energy through recuperation
- Reduction of maintenance and repair costs up to 40 %
- Higher efficiency (approx. 90 %) compared to diesel vehicles (approx. 35 %)
- Cost savings of approx. 25-30 % when comparing diesel and electricity prices\*\*
- Enhancement of own company image through sustainable transports

	BEV-100	BEV-150
--	---------	---------

Performance		
<b>Power</b>	100 kW (136 PS)	147 kW (200 PS)
<b>Torque</b>	1150 Nm	1250 Nm
<b>Drive Type</b>	Direct drive	
<b>Top Speed***</b>	90 km/h	80 km/h
<b>Range</b>	220 km	200 km

Battery specifications		
<b>Capacity</b>	75 kWh	115 kWh
<b>Voltage</b>	400 V	400 V
<b>Cell Type</b>	NMC	NMC
<b>Charge / Fast Charge Power</b>	13,2 kW / 70 kW	13,2 kW / 105 kW
<b>Charge Time / Fast</b>	6 h / -1h	9 h / -1 h
<b>Battery Lifetime (cycles)</b>	> 2500	> 2500

## EXAMPLE CONFIGURATION:

Van Base Vehicle		
<b>Model</b>	Iveco Daily 40C	Iveco Daily 70C
<b>Wheelbase</b>	4100 mm	4100 mm
<b>G.V.W.</b>	4,2 t	7 t
<b>Cargo Load</b>	ca. 1335 kg	ca. 3480 kg

Base Flatbed		
<b>Model</b>	Iveco Daily 40C	Iveco Daily 72C
<b>Wheelbase</b>	3750 mm	4350 mm
<b>G.V.W.</b>	4,2 t	7,2 t
<b>Cargo Load</b>	ca. 1470 kg	ca. 3780 kg

Chassis Cab Base Vehicle		
<b>Model</b>	Iveco Daily 40C	Iveco Daily 72C
<b>Wheelbase</b>	3750 mm	5100 mm
<b>G.V.W.</b>	4,2 t	7,2 t
<b>Chassis load capacity</b>	ca. 1865 kg	ca. 4240 kg

Other possible models: Iveco Daily 35S, 35C, 45C, 50C, 60C, 65C.

\*Government subsidies depending on the place of residence and the requirements of the applicant.

\*\*Assumptions for calculations:

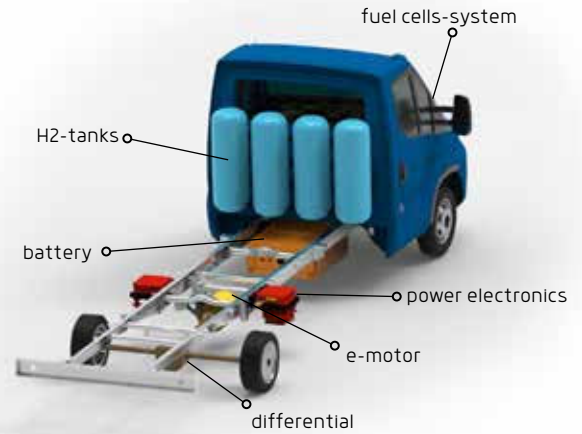
Total mileage of 350.000 km with average consumption values. 14 l diesel consumption for a 7,2 t vehicle and a diesel price of 1.08 € / liter.

52 kWh / 100km vehicle electricity consumption and an electricity price of 0.18 € / kWh (electricity price for commercial customers, this is cheaper).

\*\*\* Maximum indication of the range under ideal conditions.



# QLIH2 HYDROGEN (FCEV)



H2-System powered by



## YOUR BENEFITS

- Possible savings in acquisition costs through the retrofitting of existing and used vehicles
- Government subsidies\*
- Unlimited range through the use of a fuel cell range extender
- Short refueling times (similar to diesel)
- Emission-free transport for short and long distances
- Use of lost heat from the fuel cell, e.g. to heat the interior (electricity savings for more range)
- Free choice of the number of tanks, thus flexible price and range
- Long lifespan of the fuel cell thanks to downsizing
- Payload similar to diesel vehicle
- Enhancing of own corporate image through sustainable transportation

### FCEV-100

Performance	
<b>Power e-mode</b>	100 kW (136 PS)
<b>Torque e-mode</b>	1150 Nm
<b>Drive Type</b>	Direct drive
<b>Top Speed</b>	80 km/h
<b>Hydrogen per tank</b>	ca. 2,1 kg
<b>Range (2 tanks / 4 tanks)</b>	300 km/500 km
<b>Power fuel cell</b>	15 kW

Battery specifications	
<b>Capacity</b>	37 kWh
<b>Voltage</b>	400 V
<b>Charge Power</b>	6.6 kW
<b>Charge Time</b>	6 h
<b>Battery Lifetime (cycles)</b>	3000

## EXAMPLE CONFIGURATION:

Van Base Vehicle	
<b>Model</b>	Iveco Daily 40C
<b>Wheelbase</b>	4100 mm
<b>G.V.W.</b>	4,2 t
<b>Cargo Load</b>	ca. 1200 kg

Base Flatbed	
<b>Model</b>	Iveco Daily 40C
<b>Wheelbase</b>	4100 mm
<b>G.V.W.</b>	4,2 t
<b>Cargo Load</b>	ca. 1250 kg

Chassis Cab Base Vehicle	
<b>Model</b>	Iveco Daily 40C
<b>Wheelbase</b>	3750 mm
<b>G.V.W.</b>	4,2 t
<b>Chassis load capacity</b>	ca. 1700 kg

\*Government subsidies depending on the place of residence and the requirements of the applicant.

## CHASSIS & SUPERSTRUCTURES

Our three drive systems can be integrated into all chassis with different wheelbases and superstructures. You will therefore find tailor-made solutions for any transport requirements with the best driving dynamics and stability as well as ideal load distribution..



Van Vehicle



Flatbed/Rear Tipper



Dry Freight Case



Bus



Flatbed/Rear Tipper  
(long wheelbase)



Refrigerated Case



**Due to a legal exemption electric commercial vehicles up to max. 4.2 tons gross vehicle weight may still be driven with the current class B driver's license.**

**Our e-vehicles based on the Iveco Daily 40C (4.2 tons) fall precisely within this regulation. This compensates for the extra weight of the drive system.**

Just contact us! The vehicle configuration for other special superstructures can be checked individually.





### Q-Benefit

Ecological and economical: everything from a single source, cost savings, ideal for stop and go applications, new delivery potentials, more efficient processes, better working environment.



### Q-Consult

Individual analysis of the status quo: vehicles, cargo, route profiles, range, charging infrastructure, energy concepts. Performance audit: cost analysis (expenditure, savings), government subsidies, financing. Application of the individual possible subsidy.



### Q-Truck

Sector solutions according to the individual mission profile: model, construction, equipment, performance, range. Due to our own e-engineering we are able to create special solutions.



### Q-Emotion

Conservation of resources thanks to remanufacturing. Quiet and emission-free driving. Max. torque right from the start. Compensation of CO2 emissions of the battery production by the conversion of used and stock vehicles.



## WE ARE YOUR E-SOLUTION



### Q-Experience

Over 138 years of experience in the commercial vehicle business out of the Haller Group.

We know the vehicles, the market and requirements.



### Q-Service

The focus is set on economic efficiency, flexibility and mobility for the customer. Service, maintenance and repair with reliability and quality at over 700 service points all over Europe.



### Q-Finance

Individual solutions for rent, purchase, financing and leasing in order to be cost-efficient on the road with your Q-Truck.



### Q-Power

Battery solutions for every requirement. We find the suitable battery capacity and put together your individual battery configuration.

Very high availability.



### Q-Charge

Green power and intelligent charging solutions (charging stations at your company and e.g. at unloading points for intermediate charges on the way) to increase efficiency and to minimize charging times and costs.







View of the engine compartment with **fuel cell**



**QUANTRON NETWORK: STRONG TOGETHER**

Combined quality for your commercial vehicles in more than 700 service centers throughout Europe!

Alltrucks Truck & Trailer Service - that's our answer for your commercial vehicle service. As a partner of the full-service workshop concept of the three leading suppliers Bosch, ZF and Knorr-Bremse, we offer you quality and competence at the highest level. For the service, maintenance and repair of your entire commercial vehicle fleet. Whether transporter or truck, whether MAN, Mercedes, Scania, IVECO or DAF, we support and help you, so that you can concentrate on the essentials: the problem-free processing of all your orders.



**KNORR-BREMSE**



**BOSCH**



**QUANTRON AG HEADQUARTER**  
**AUGSBURG, GERMANY**

**QUANTRON AG SALES POINTS**  
**ULM, GERMANY**  
**SCHAFFHAUSEN, SWITZERLAND**  
**OSLO, NORWAY**  
**BOLOGNA, ITALY**  
**MARTINEZ VILLERGAS, SPAIN**  
**TEL AVIV, ISRAEL**  
**RIO DE JANEIRO, BRAZIL**  
**LAGOS, NIGERIA**  
**FERNDAL, MI USA**





////////////////////// **QUANTRON PRODUCT PORTFOLIO** ////////////////////////



**Q-MOBILITY**

**Q-POWER**

**Q-SERVICE**



**Quantron AG**

Koblenzer Straße 2  
D-86368 Gersthofen/Augsburg  
Phone: +49 (0) 821 - 78 98 40 - 0  
Fax: +49 (0) 821 - 78 98 40 - 99  
Mail: [info@quantron.net](mailto:info@quantron.net)  
Web: [www.quantron.net](http://www.quantron.net)

**PRESENTED BY:**